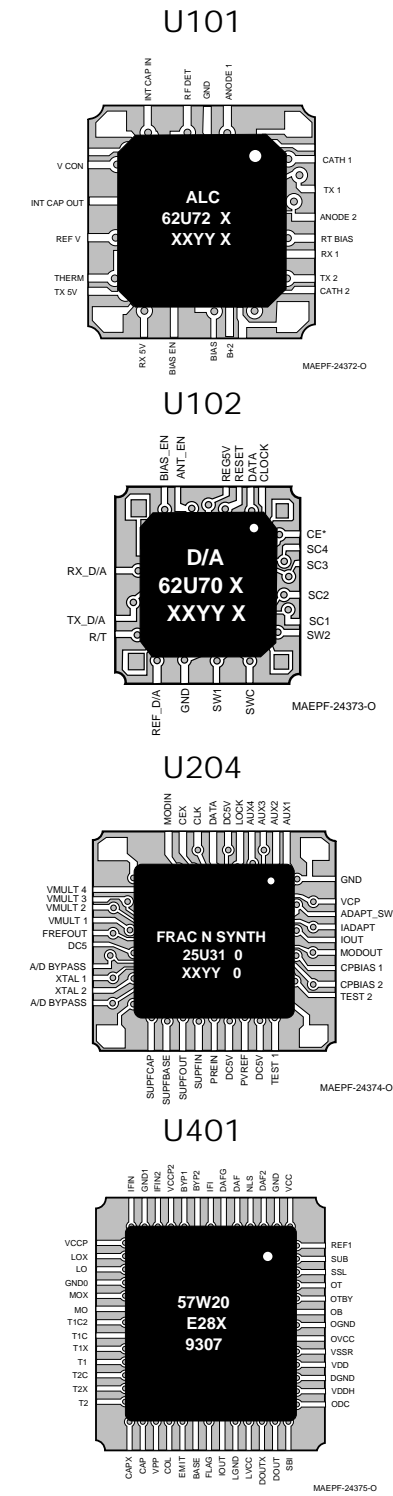
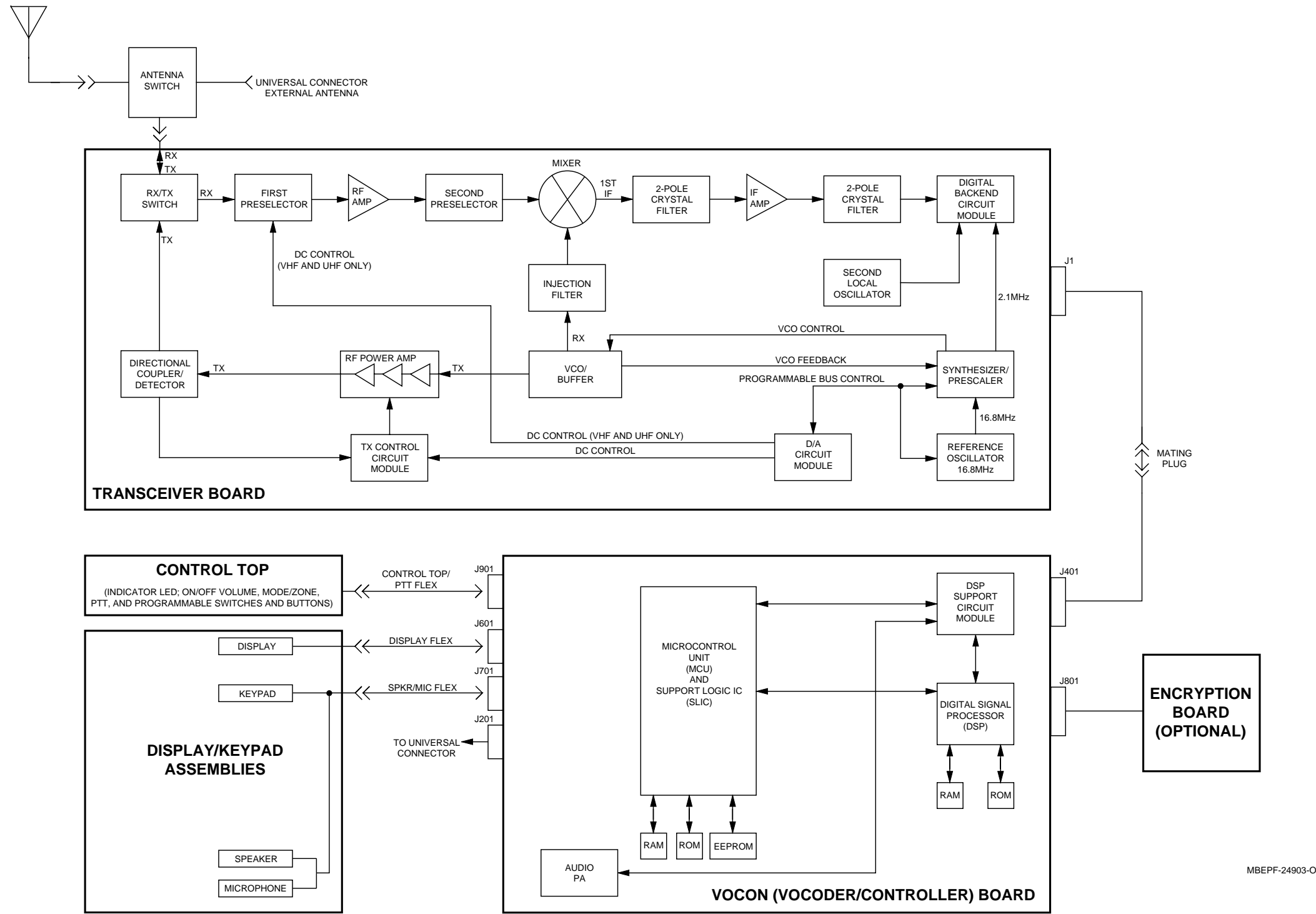


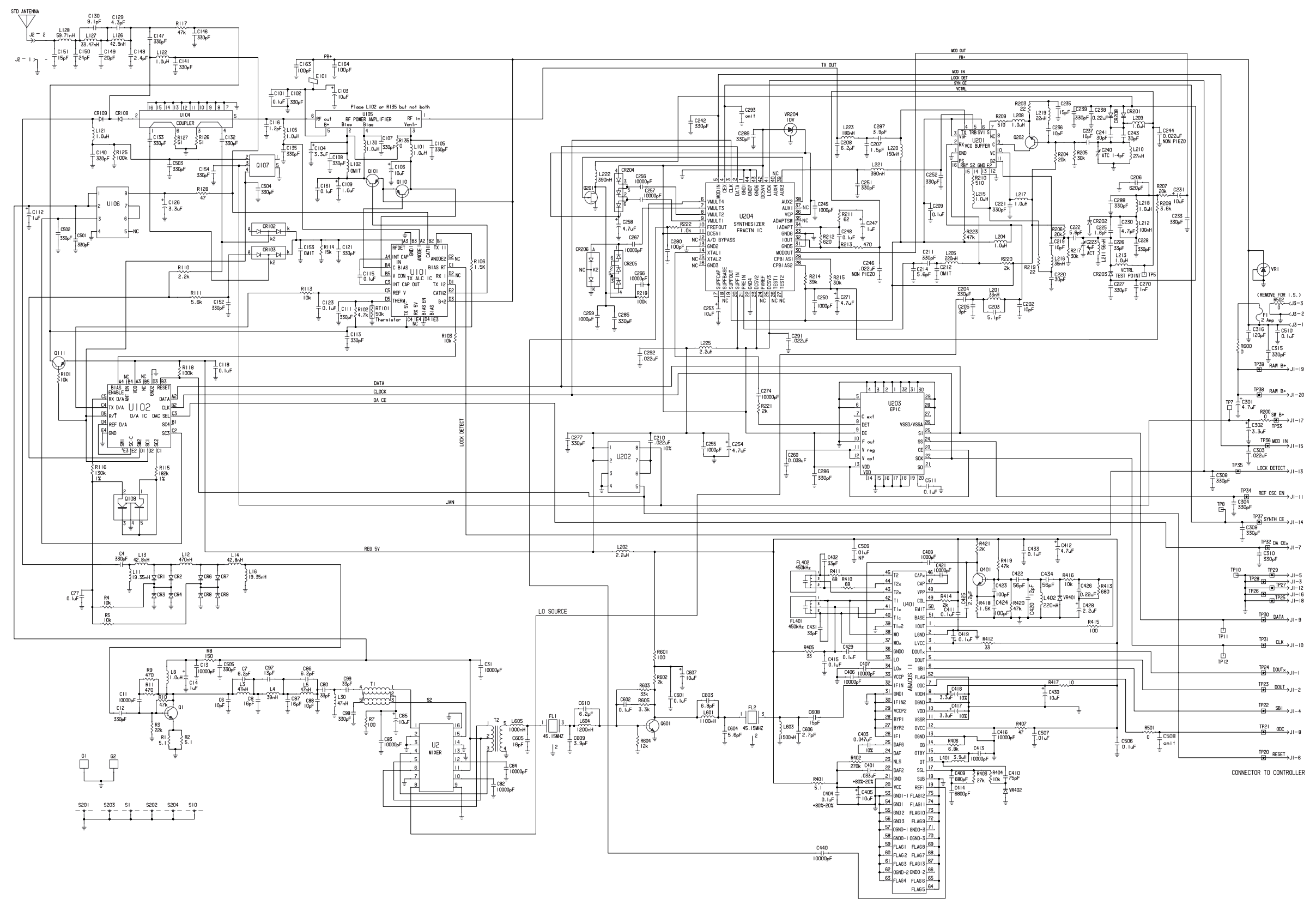
Block Diagrams, Schematics,
Electrical Parts Lists,
and Circuit Board Details

13

Transceiver Board
Integrated Circuit Modules



Radio Interconnect Diagram



63B81094C71-0

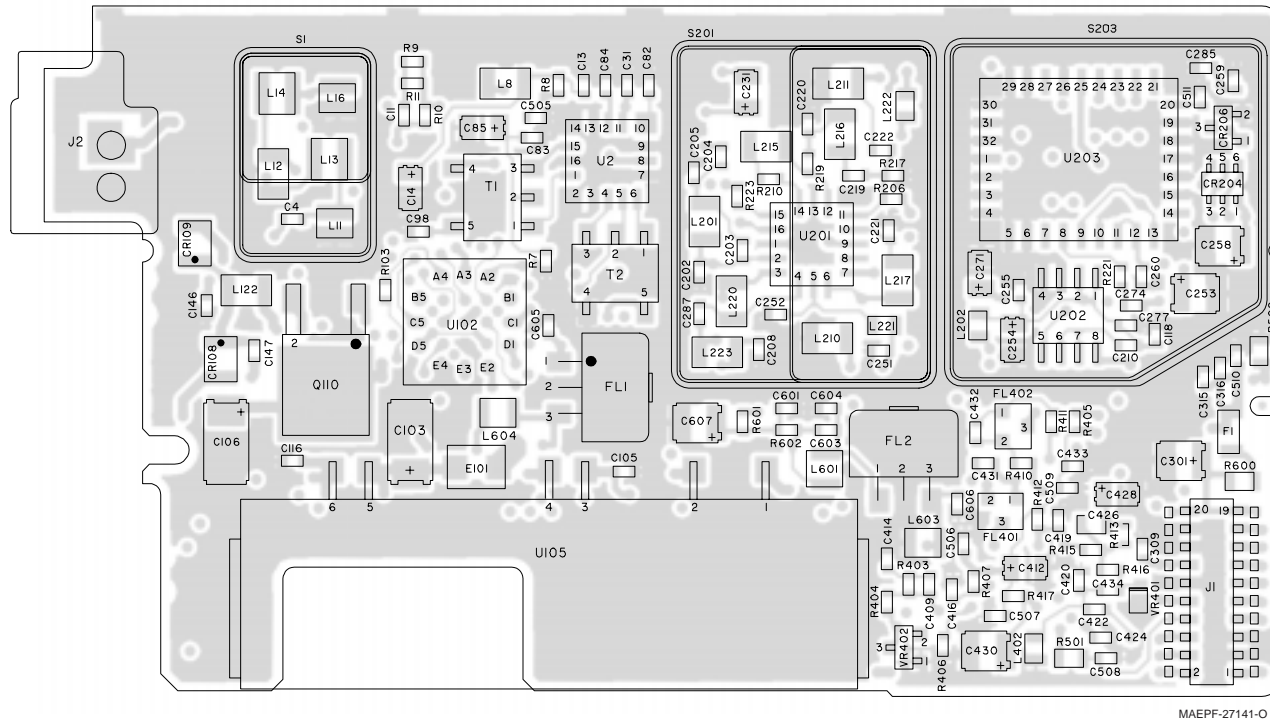
NLD8892R VHF Transceiver Board Schematic Diagram

NLD8892R VHF Transceiver Board
Electrical Parts List

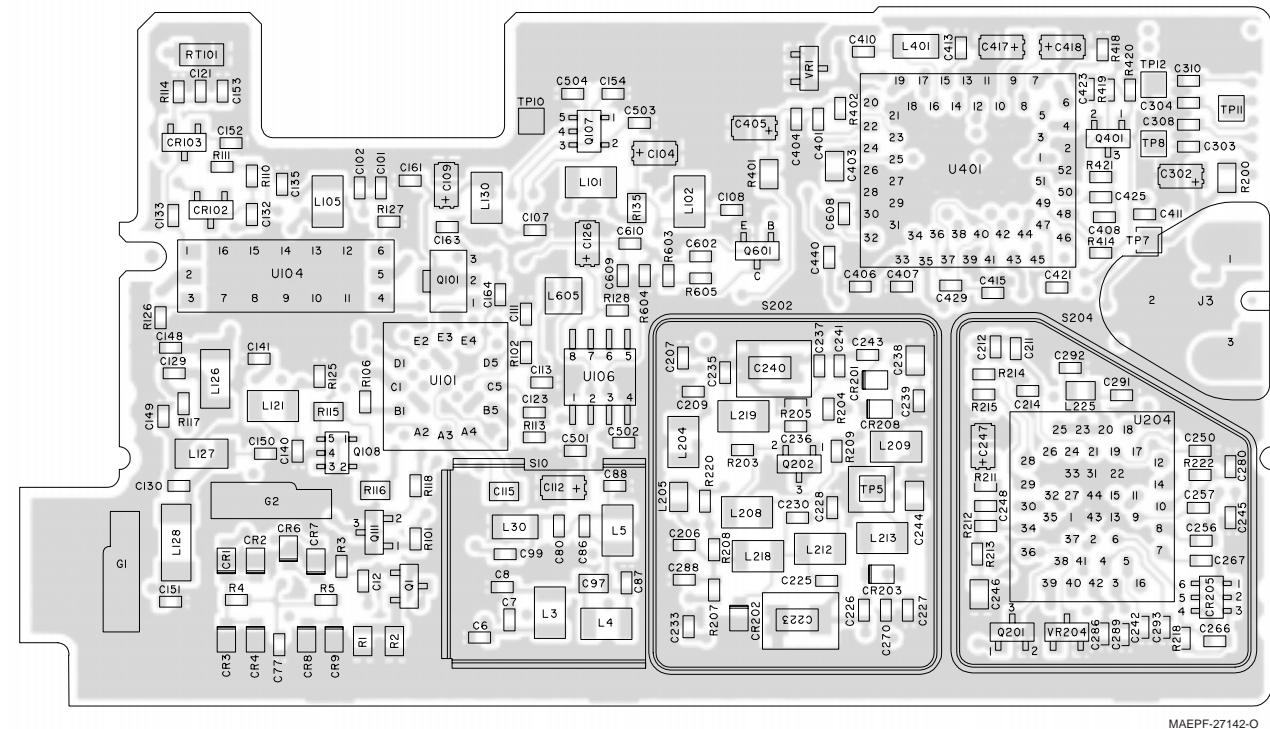
ITEM	MOTOROLA PART NUMBER	DESCRIPTION
		CAPACITOR, Fixed: pF ±5%; 50V unless otherwise stated
C4	2113931F13	330
C6	2113930F27	10
C7	2113930F22	6.2 pF 50V ±0.25 pF 50V
C8	2113930F32	16
C11	2113931F49	10 nF
C12	2113931F13	330
C13	2113931F49	10 nF
C14	2311049A07	1 uF
C31	2113931F49	10 nF
C77	2113932K15	0.1 uF +80/-20% 16V
C80	2113930F39	33 pF
C82 thru C84	2113931F49	10 nF
C85	2311049A60	10 uF
C86	2113930F22	6.2 pF 50V ±0.25 pF 50V
C87	2113930F32	16
C88	2113930F27	10
C97	2113740A32	13
C98	2113931F13	330
C99	2113930F39	33
C101	2113932K15	0.1 uF +80/-20% 16V
C102	2113931F13	330
C103	2311049J26	10 uF
C104	-----	Not Placed.
C105	2113931F13	330
C106	2311049J26	10 uF
C107	2113931F13	330
C108	-----	Not Placed.
C109	2311049A07	1 uF
C111	2113931F13	330
C112	2311049A07	1 uF
C113	2113931F13	330
C115	2113743A19	0.1 uF 10%
C116	2113930F05	1.2 pF 50V ±0.1 pF 50V
C118	2113932K15	0.1 uF +80/-20% 16V
C121	2113931F13	330
C123	2113932K15	0.1 uF +80/-20% 16V
C126	2311049A54	3.3 uF
C129	2113930F03	1.0 pF 50V ±0.1 pF 50V
C130	2113930F27	10
C132, C133	2113931F13	330
C135	2113931F13	330
C140, C141	2113931F13	330
C146, C147	2113931F13	330
C147	2113931F13	330
C148	2113930F03	1 pF 50V ±0.1 pF 50V
C149, C150	2113930F36	24
C151	2113930F29	12
C152	2113931F13	330
C153	-----	Not Placed.
C154	2113931F13	330
C161	2113932K15	0.1 uF +80/-20% 16V
C163, C164	2113930F51	100
C202	2113930F27	10
C203	2113930F20	5.1 pF 50V ±0.25 pF 50V
C204	2113931F13	330
C205	2113930F14	3 pF 50V ±0.25 pF 50V
C206	2113931F20	620
C207	2113930F07	1.5 pF 50V ±0.1 pF 50V
C208	2113930F22	6.2 pF 50V ±0.25 pF 50V

C209	2113932K15	0.1 uF +80/-20% 16V
C210	2113932E07	.022 uF 10% 16V
C211	2113931F13	330
C212	-----	Not Placed.
C214	2113930F21	5.6 pF 50V ±0.25 pF 50V
C219	2113930F27	10
C220	2113930F38	30
C221	2113931F13	330
C222	2113930F21	5.6 pF 50V ±0.25 pF 50V
C223	2113906C02	4 pF ATC
C225	2113930F08	1.6 pF 50V ±0.1 pF 50V
C226	2113930F39	33
C227, C228	2113931F13	330
C230	2113930F29	12
C231	2311049A60	10 uF
C233	2113931F13	330
C235	2113930F31	15
C236, C237	2113930F27	10
C238	2113743A23	0.22 uF 10%
C239	2113931F13	330
C240	2113906C02	4 pF ATC
C241	2113930F38	30
C242	2113931F13	330
C243	2113930F36	24
C244	2109720D09	.022 uF
C245	2113931F25	1 nF
C246	2109720D09	.022 uF
C247	2311049A07	1 uF
C248	2113932K15	0.1 uF +80/-20% 16V
C250	2113931F25	1 nF
C251, C252	2113931F13	330
C253	2311049J23	10 uF
C254	2311049A56	4.7 uF
C255	2113931F25	1 nF
C256, C257	2113931F49	10 nF
C258	2311049J11	4.7 uF
C259	2113931F25	1 nF
C260	2113932K05	.039 uF +80/-20% 16V
C266, C267	2113931F49	10 nF
C270	2113931F25	1 nF
C271	2311049A56	4.7 uF
C274	2113931F49	10 nF
C277	2113931F13	330
C280	2113930F51	100
C285, C286	2113931F13	330
C287	2113930F14	3 pF 50V ±0.25 pF 50V
C288, C289	2113931F13	330
C291, C292	2113932E03	.015 uF 10% 16V
C293	-----	Not Placed.
C301	2311049J11	4.7 uF
C302	2311049A54	3.3 uF
C303	2113932E03	.015 uF 10% 16V
C304	2113931F13	330
C308 thru C310	2113931F13	330
C315	2113931F13	330
C316	2113930F53	120
C401	2113932K03	.033 uF +80/-20% 16V
C403	2113743A13	.047 uF
C404	2113932K15	0.1 uF +80/-20% 16V
C405	2311049A60	10 uF
C406, C407	2113931F49	10 nF
C408	2113931F25	1 nF
C409	2113931F21	680
C410	2113930F48	75
C411	2113932K15	0.1 uF +80/-20% 16V

VIEWED FROM SIDE 1



VIEWED FROM SIDE 2



C412	2311049A03	0.22 uF
C413	2113931F49	10 nF
C414	2113931F45	6.8 nF
C415	2113932K15	0.1 uF +80/-20% 16V
C416	2113931F49	10 nF
C417, C418	2311049A42	3.3 uF
C419	2113932K15	0.1 uF +80/-20% 16V
C420	2113930F32	16
C421	2113931F49	10 nF
C422	2113930F45	56
C423, C424	2113930F51	100
C425	2113930F35	22
C426	2113743A23	0.22 uF 10%
C428	2311049A40	2.2 uF
C429	2113932K15	0.1 uF +80/-20% 16V
C430	2311049J23	10 uF
C431, C432	2113930F39	33
C433	2113932K15	0.1 uF +80/-20% 16V
C434	2113930F45	56
C440	2113931F49	10 nF
C501 thru C505	2113931F13	330
C506	2113932K15	0.1 uF +80/-20% 16V
C507	2113931F49	10 nF
C508	-----	Not Placed.
C509	2113931F49	10 nF
C510, C511	2113932K15	0.1 uF +80/-20% 16V
C601, C602	2113932K15	0.10 uF +80/-20% 16V
C603	2113930F23	6.8 pF 50V ±0.25 pF 50V
C604	2113930F21	5.6 pF 50V ±0.25 pF 50V
C605	2113930F32	16
C606	2113930F13	2.7 pF 50V ±0.25 pF 50V
C607	2311049J23	10 uF
C608	2113930F31	15
C609	2113930F17	3.9 pF 50V ±0.25 pF 50V
C610	2113930F22	6.2 pF 50V ±0.25 pF 50V
		DIODE: See Note 1.
CR1 thru CR4	4862824C01	Varactor
CR6 thru CR9	4862824C01	Varactor
CR102, CR103	4805129M67	Dual
CR108, CR109	4802482J02	PIN
CR201	4802245J29	Varactor
CR202, CR203	4862824C03	Varactor
CR204, CR205	4802233J09	Triple
CR206	4805129M06	Triple
CR208	4802245J29	Varactor
		CORE:
E101	2484657R01	Inductor Bead
		FUSE:
F1	6505757V02	2 Amp
		FILTER: See Note 2.
FL1, FL2	4805245J32	45.15 MHz
FL401, FL402	9105398W01	450 kHz
		CONTACT:
G1, G2	3905643V01	Antenna Ground
		JACK:
J1	0905461X03	Transceiver/VOCON Connector
J2	3905113W03	Antenna Connector
J3	3902625J04	B+ Contact
		COIL, RF:
L3	2462587T42	47 nH
L4	2462587T41	39 nH
L5	2462587T42	47 nH
L8	2462587T30	1 uH
L11	2460591M12	21.95 nH
L12	2462587T23	470 nH

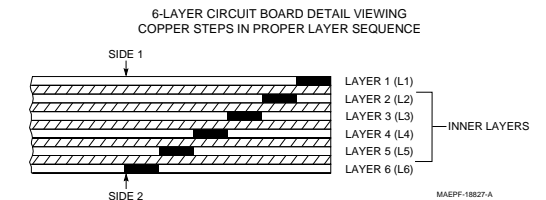
L13, L14	2460591N36	43.67 nH
L16	2460591M12	21.95 nH
L30	2462575A21	47 nH
L101	2462587T30	1 uH
L102	-----	Not Placed.
L105	2462587T30	1 uH
L121, L122	2462587T30	1 uH
L126	2460591H40	42.90 nH
L127	2460591G24	33.47 nH
L128	2460591K40	59.71 nH
L130	2462587T30	1 uH
L201	2462587T40	33 nH
L202	2462587Q20	2.2 uH
L204	2462587T30	1 uH
L205	2462587V38	220 nH
L208, L209	2462587T30	1 uH
L210	2462587T39	27 nH
L211	2462587T12	56 nH
L212	2462587T14	82 nH
L213	2462587T30	1 uH
L215	2462587T30	1 uH
L216	2462587T41	39 nH
L217, L218	2462587T30	1 uH
L219	2462587T38	22 nH
L220	2462587T17	150 nH
L221, L222	2462587Q42	390 nH
L223	2462587T16	120 nH
L225	2462587Q20	2.2 uH
L401	2462575A16	3.9 uH
L402	2462587V38	220 nH
L601	2405452C61	1.1 uH
L603	2405452C64	1.5 uH
L604	2405452C62	1.2 uH
L605	2405452C60	1 uH
		TRANSISTOR: See Note 1.
Q101	4805128M27	NPN
Q107	4805921T02	Switching
Q108	4802245J10	Dual NPN
Q110	4813822A10	PNP
Q111	4805128M16	PNP
Q201	4802245J15	JFET P-Channel
Q202	4805218N55	NPN
Q401	4805218N55	NPN
		RESISTOR, Fixed: Ω±5%; 1/8W Unless otherwise stated.
R1, R2	0660079U18	5.1
R3	0662057A81	22k
R4, R5	0662057A73	10k
R7	0662057A25	100
R8	0662057A29	150
R9	0662057A41	470
R10	0662057A89	47k
R11	0662057A41	470
R101	0662057A73	10k
R102	0662057A65	4.7k
R103	0662057A73	10k
R106	0662057A56	2k
R110	0662057A57	2.2k
R111	0662057A67	5.6k
R113	0662057A73	10k
R114	0662057A77	15k
R115	0662057G27	182k
R116	0662057G19	130k
R117	0662057A89	47k
R118	0662057A97	100k

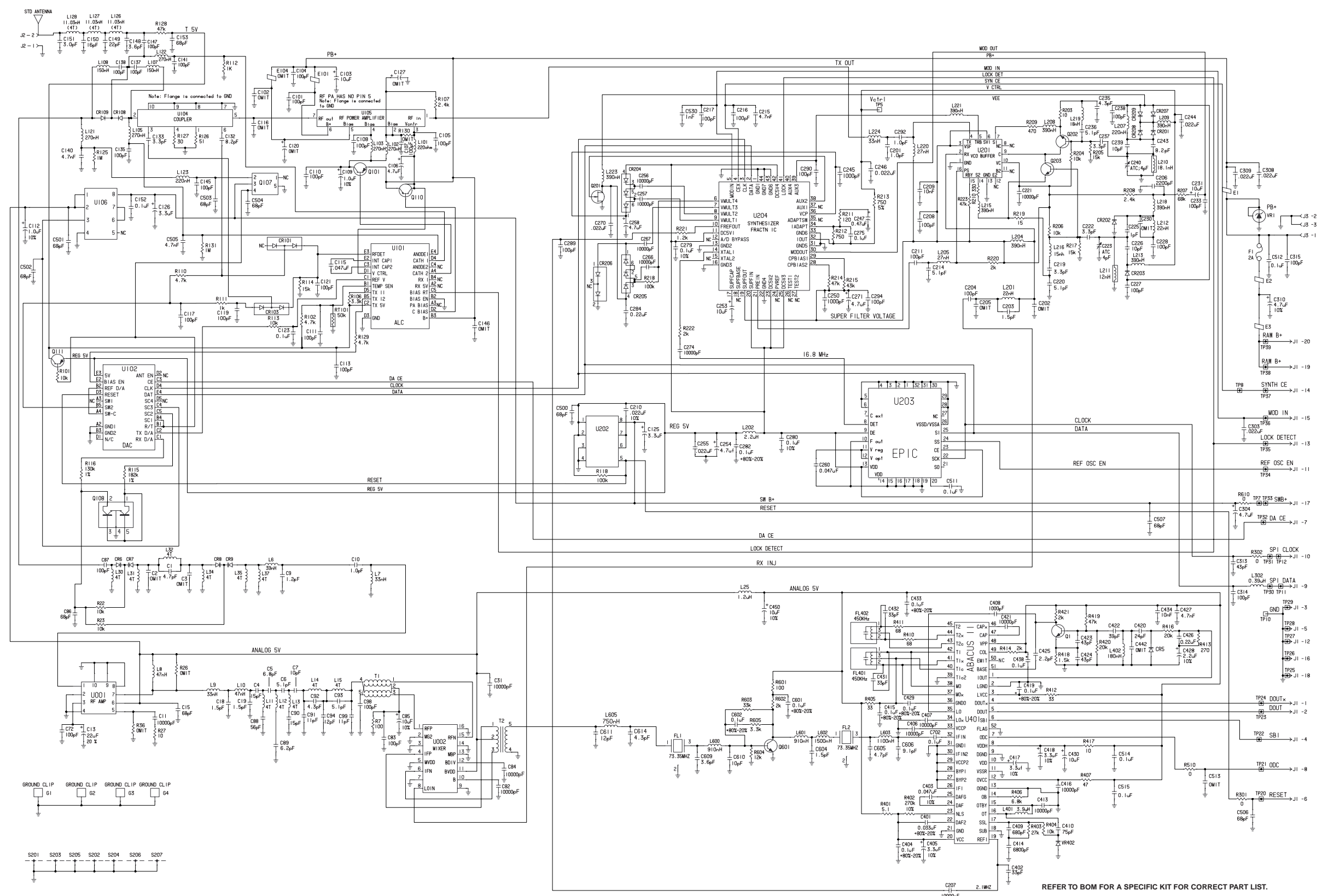
R125	0662057A97	100k
R126, R127	0662057A18	51
R128	0662057A17	47
R135	-----	Not Placed.
R200	0662057C01	0 ±.050
R203	0662057A09	22
R204	0662057A80	20k
R205	0662057A84	30k
R206	0662057A80	20k
R207	0662057A80	20k
R208	0662057A69	6.8k
R209, R210	0662057A42	510
R211	0662057A20	62
R212	0662057A44	620
R213	0662057A41	470
R214	0662057A87	39k
R215	0662057A84	30k
R217	0662057A84	30k
R218	0662057A97	100k
R219	0662057A09	22
R220, R221	0662057A56	2k
R222	0662057A49	1k
R223	0662057A89	47k
R401	0660079U18	5.1
R402	0662057B08	270k
R403	0662057A83	27k
R404	0662057A73	10k
R405	0662057A13	33
R406	0662057A69	6.8k
R407	0662057A17	47
R410, R411	0662057A21	68
R412	0662057A13	33
R413	0662057A45	680
R414	0662057A56	2k
R415	0662057A25	100
R416	0662057A73	10k
R417	0662057A01	10
R418	0662057A53	1.5k
R419, R420	0662057A89	47k
R421	0662057A56	2k
R501, R502	0662057C01	0 ±.05
R600	0662057C01	0 ±.05
R601	0662057A25	100
R602	0662057A56	2k
R603	0662057A85	33k
R604	0662057A75	12k
R605	0662057A61	3.3k
		THERMISTOR:
RT101	0605621T02	50k
		SHIELD:
S1	2602661J01	Varactor Filter
S010	2602815X01	Fixed Tuned Filter
S201	2602657J01	VCO
S202	2602674J02	VCO Back
S203	2602658J01	Pendulum
S204	2602675J01	Synthesizer, Back
		TRANSFORMER:
T1	2505515V08	4:1
T2	2505515V11	16:1
		INTEGRATED CIRCUIT MODULE:
		See Note 1.
U2	5105329V26	Mixer
U101	5105835U52	TX (ALC)
U102	5105835U51	D/A Converter
U104	5102001J69	Coupler

U105	5105385Y36	RF Power Amplifier
U106	5105469E65	5 Volt Regulator
U201	5102227J37	VCO Buffer
U202	5105469E65	5 Volt Regulator
U203	5105385Y42	16.8 MHz Reference Oscillator
U204	5105457W81	Fractional-N-Synthesizer
U401	5105835U90	ABACUS
		DIODE: See Note 1.
VR001	4813830A33	Zener, 20V
VR204	-----	Not Placed.
VR401	4862824C01	Varactor
VR402	4805129M58	Varactor

Notes:

- For optimum performance, order replacement diodes, transistors, and circuit modules by Motorola part number only.
- When ordering crystals, specify carrier frequency, crystal frequency, crystal type number, and Motorola part number.
- Part value notations:
 $p=10^{-12}$
 $n=10^{-9}$
 $\mu=10^{-6}$
 $m=10^{-3}$
 $k=10^3$
 $M=10^6$
- ITEM refers to the component reference designator.
- The VHF Transceiver Board uses a 6-layer printed circuit board.



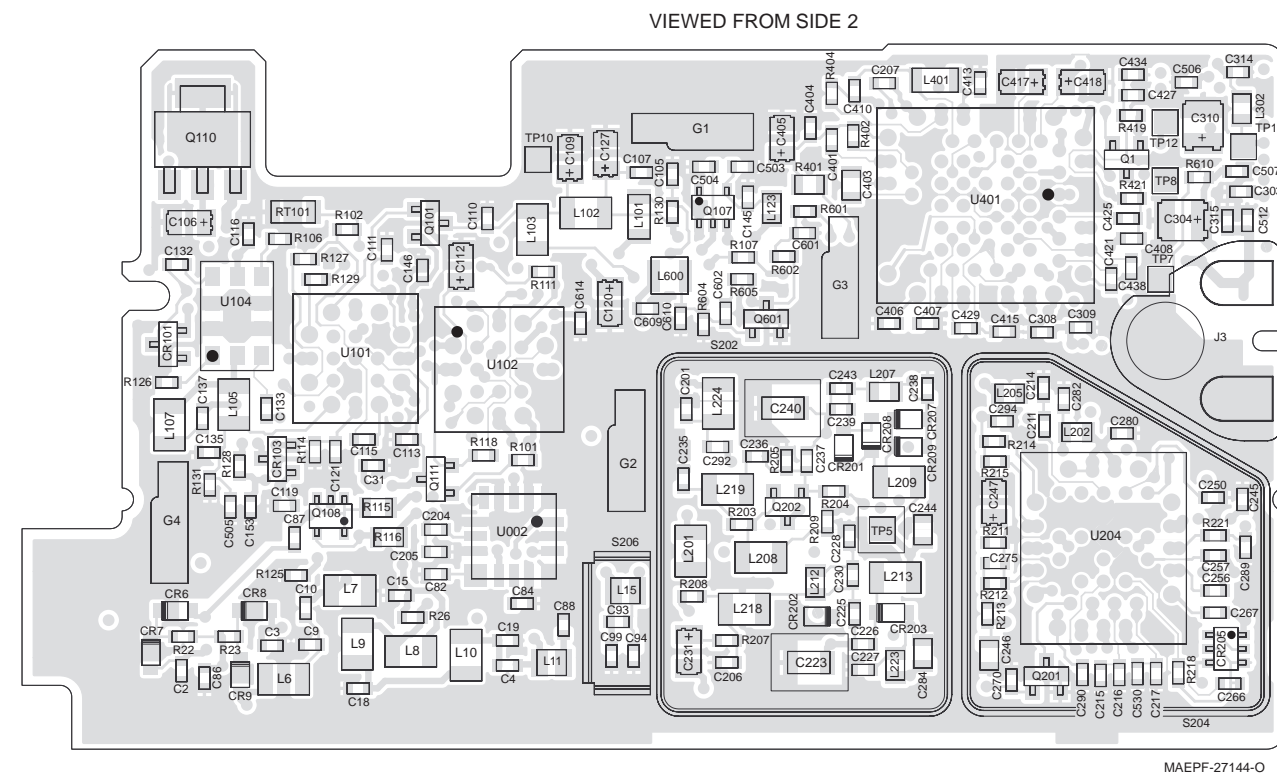
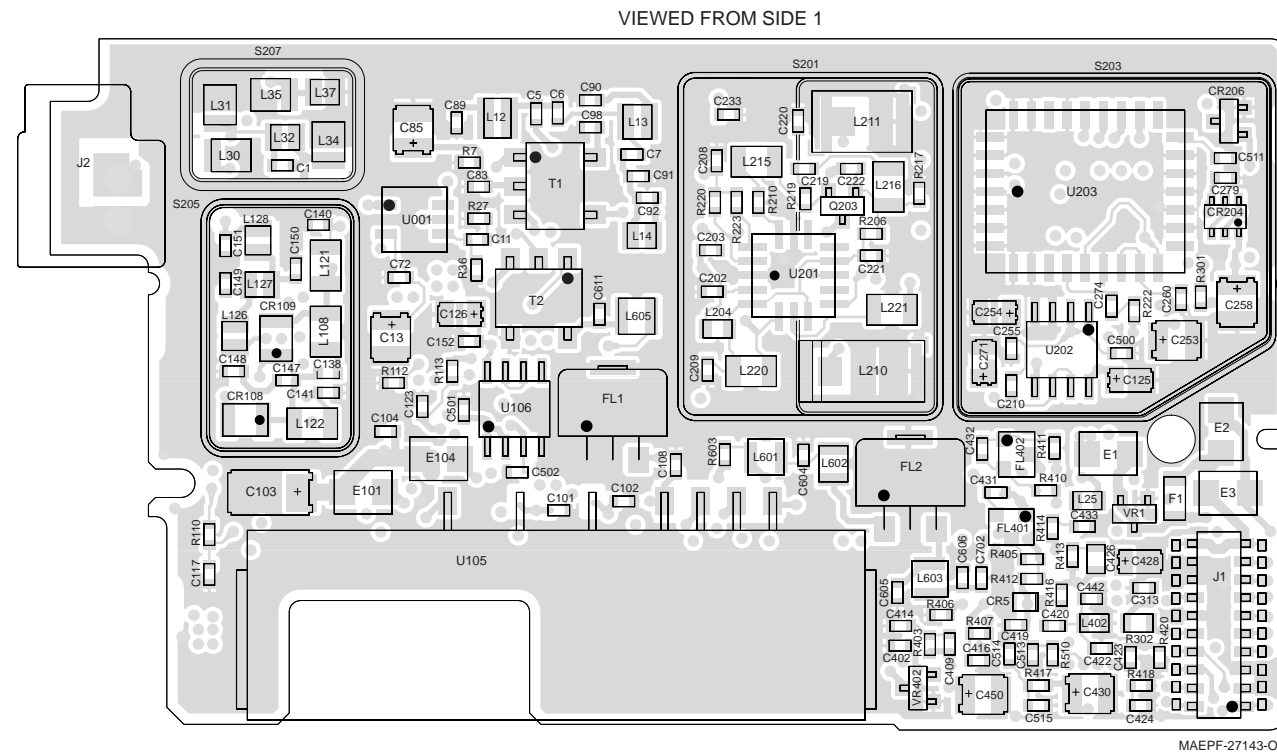


REFER TO BOM FOR A SPECIFIC KIT FOR CORRECT PART LIST.

638B1094C73-0

NLE4560K UHF Range 1 Transceiver Board Schematic Diagram

NLE4560K UHF Range 1 Transceiver Board
Electrical Parts List



NLE4560K UHF Range 1 Transceiver Circuit Board Details and Parts List

ITEM	MOTOROLA PART NUMBER	DESCRIPTION
		CAPACITOR, Fixed: pF ±5%; 50V unless otherwise stated
C1	2113930F19	4.7 pF 50V ±0.25 pF 50V
C2, C3	-----	Not Placed.
C4	2113930F31	15
C5	2113930F23	6.8 pF 50V ±0.25 pF 50V
C6	2113930F20	5.1 pF 50V ±0.25 pF 50V
C7	2113930F27	10
C9	2113930F05	1.2 pF 50V ±0.1 pF 50V
C10	2113930F03	1.0 pF 50V ±0.1 pF 50V
C11	2113931F49	.01 uF
C13	2311049A66	22 uF
C15	2113930F47	68 pF
C18, C19	2113930F07	1.5 pF 50V ±0.1 pF 50V
C31	2113931F49	.01 uF
C72	2113930F51	100
C82	2113931F49	.01 uF
C83	2113930F51	100
C84	2113931F49	.01 uF
C85	2311049J23	10 uF
C86	2113930F47	68 pF
C87	2113930F51	100
C88	2113930F45	56
C89	2113930F22	6.2 pF 50V ±0.25 pF 50V
C90	2113930F31	15
C91	2113930F28	11
C92	2113930F18	4.3 pF 50V ±0.25 pF 50V
C93	2113930F20	5.1 pF 50V ±0.25 pF 50V
C94	2113930F29	12
C098	2113930F51	100
C099	2113930F28	11
C101	2113930F51	100
C102	-----	Not Placed.
C103	2311049J26	10 uF
C104, C105	2113930F51	100
C106	2311049A56	4.7 uF
C107, C108	2113930F51	100
C109	2311049A07	1 uF
C110, C111	2113930F51	100
C112	2311049A07	1 uF
C113	2113930F51	100
C115	2113932K07	.047 uF +80/-20% 16V
C116	-----	Not Placed.
C117, C119	2113930F51	100
C120	-----	Not Placed.
C121	2113930F51	100
C123	2113932K15	0.1 uF +80/-20% 16V
C125, C216	2311049A54	3.3 uF
C127	-----	Not Placed.
C132	2113930F25	8.2 pF 50V ±0.25 pF 50V
C133	2113930F15	3.3 pF 50V ±0.25 pF 50V
C135	2113930F51	100
C137, C138	2113930F51	100
C140	2113931F41	4.7 nF
C141	2113930F51	100
C145	2113930F51	100
C146	-----	Not Placed.
C147	2113930F51	100
C148	2113930F16	3.6 pF 50V ±0.25 pF 50V
C149	2113930F35	22
C150	2113930F32	16
C151	2113930F14	3.0 pF 50V ±0.25 pF 50V
C152	2113932K15	0.1 uF +80/-20% 16V

C153	2113930F47	68
C201	2113930F03	1 pF 50V ±0.1 pF 50V
C202	-----	Not Placed.
C203	2113930F07	1.5 pF 50V ±0.1 pF 50V
C204	2113930F51	100
C205	-----	Not Placed.
C206	2113931F33	2.2 nF
C207	2113931F49	.01 uF
C208	2113930F51	100
C209	2113931F49	.01 uF
C210	2113932E07	.022 uF 10% 16V
C211	2113930F51	100
C214	2113930F20	5.1 pF 50V ±0.25 pF 50V
C215	2113931F41	4.7 nF
C216, C217	2113930F51	100
C219	2113930F15	3.3 pF 50V ±0.25 pF 50V
C220	2113930F20	5.1 pF 50V ±0.25 pF 50V
C221	2113931F49	.01 uF
C222	2113930F15	3.3 pF 50V ±0.25 pF 50V
C223	2113906C02	4
C225	2113930F03	1 pF 50V ±0.1 pF 50V
C226	2113930F29	12
C227, C228	2113930F51	100
C230	-----	Not Placed.
C231	2311049A60	10 uF
C233	2113930F51	100
C235	2113930F18	4.3 pF 50V ±0.25 pF 50V
C236	2113930F20	5.1 pF 50V ±0.25 pF 50V
C237	2113930F15	3.3 pF 50V ±0.25 pF 50V
C238	2113930F51	100
C239	2113930F27	10
C240	2113906C02	4
C243	2113930F25	8.2 pF 50V ±0.25 pF 50V
C244	2109720D09	.022 uF
C245	2113931F25	1 nF
C246	2109720D09	.022 uF
C247	2311049A05	0.47 uF
C250	2113931F25	1 nF
C253	2311049J23	10 uF
C254	2311049A56	4.7 uF
C255	2113932E07	.022 uF 10% 16V
C256, C257	2113931F49	10 nF
C258	2311049J11	4.7 uF
C260	2113932K07	.047 uF +80/-20% 16V
C266, C267	2113931F49	10 nF
C270	2113932E07	.022 uF 10% 16V
C271	2311049A56	4.7 uF
C274	2113931F49	10 nF
C275	2113932K15	0.1 uF +80/-20% 16V
C279, C280	2113932K15	0.1 uF +80/-20% 16V
C282	2113932K15	0.1 uF +80/-20% 16V
C284	2113743A23	0.22 uF 10%
C289, C290	2113930F51	100
C292	2113930F03	1 pF 50V ±0.1 pF 50V
C294	2113930F51	100
C303	2113932E07	.022 uF 10% 16V
C304	2311049J11	4.7 uF
C308	2113932E07	.022 uF 10% 16V
C309	2113932E07	.022 uF 10% 16V
C310	2311049J11	4.7 uF
C313	2113930F42	43
C314, C315	2113930F51	100
C401	2113932K03	.033 uF +80/-20% 16V
C402	2113930F39	33
C403	2113743A13	.047 uF
C404	2113932K15	0.1 uF +80/-20% 16V
C405	2311049A42	3.3 uF
C406, C407	2113931F49	10 nF

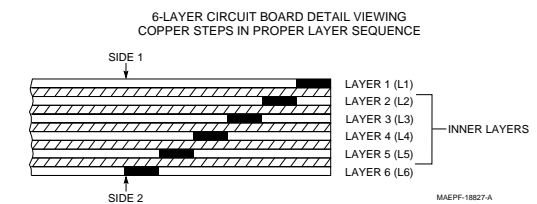
C408	2113931F25	1 nF
C409	2113931F21	680
C410	2113930F48	75
C413	2113931F49	10 nF
C414	2113931F45	6.8 nF
C415	2113932K15	0.1 uF +80/-20% 16V
C416	2113931F49	10 nF
C417, C418	2311049A42	3.3 uF
C419	2113932K15	0.1 uF +80/-20% 16V
C420	2113930F36	24
C421	2113931F49	10 nF
C422	2113930F41	39
C423, C424	2113930F42	43
C425	2113930F11	2.2 pF 50V ±0.25 pF 50V
C426	2113743A23	0.22 uF 10%
C427	2113931F41	4.7 nF
C428	2311049A40	2.2 uF
C429	2113932K15	0.1 uF +80/-20% 16V
C430	2311049J23	10 uF
C431, C432	2113930F39	33
C433	2113932K15	0.1 uF +80/-20% 16V
C434	2113931F49	10 nF
C438	2113932K15	0.1 uF +80/-20% 16V
C442	-----	Not Placed.
C450	2311049J23	10 uF
C500 thru C504	2113930F47	68
C505	2113931F41	4.7 nF
C506, C507	2113930F47	68
C511, C512	2113932K15	0.1 uF +80/-20% 16V
C513	-----	Not Placed.
C514, C515	2113932K15	0.1 uF +80/-20% 16V
C530	2113931F25	1
C601, C602	2113932K15	0.1 uF +80/-20% 16V
C604	2113930F07	1.5 pF 50V ±0.1 pF 50V
C605	2113930F19	4.7 pF 50V ±0.25 pF 50V
C606	2113930F26	9.1 pF 50V ±0.25 pF 50V
C609	2113930F16	3.6 pF 50V ±0.25 pF 50V
C610	2113930F27	10
C611	2113930F29	12
C614	2113930F18	4.3 pF 50V ±0.25 pF 50V
C702	2113932K15	0.1 uF +80/-20% 16V DIODE: See Note 1.
CR5 thru CR9	4862824C01	Varactor
CR101	4805129M67	Dual
CR103	4805129M67	Dual
CR108, CR109	4802482J02	PIN
CR201	4802245J29	Varactor
CR202	4862824C01	Varactor
CR203	4862824C03	Varactor
CR204, CR205	4802233J09	Triple
CR206	4805129M06	Triple
CR207 thru CR209	4802245J29	Varactor
E1 thru E3	2484657R01	Inductor Bead
E101	2484657R01	Inductor Bead
E104	2484657R01	Inductor Bead
F1	6505757V02	2 Amp FUSE: FILTER: See Note 2.
FL1, FL2	4805245J33	73.35 MHz
FL401, FL402	9105398W01	450 kHz CONTACT:
G1 thru G4	3905643V01	Antenna Ground JACK:
J1	0905461X03	Transceiver/VOCON Connector
J2	3905113W03	Antenna Connector
J3	3902625J04	Contact B+

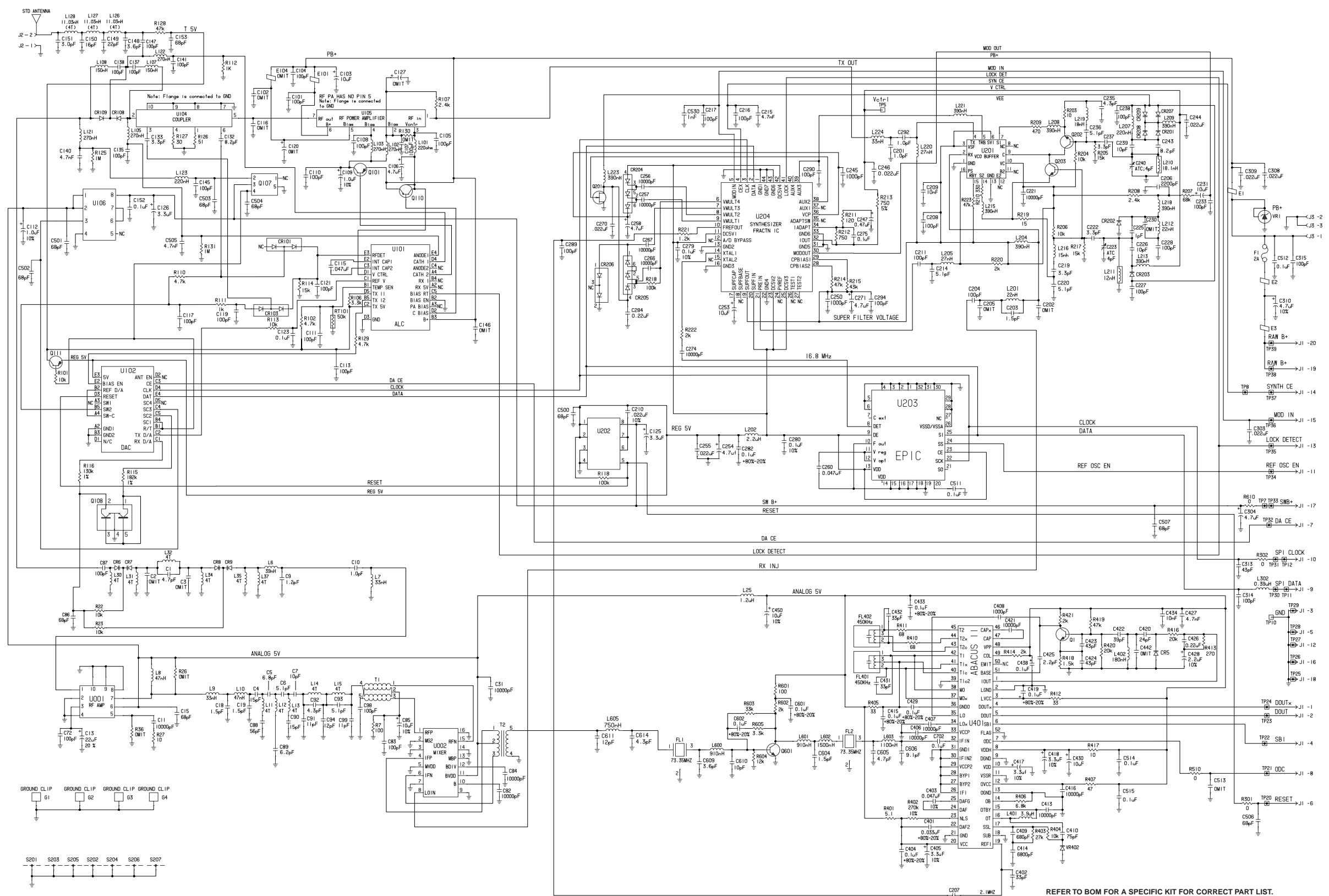
L6	2462587T41	COIL, RF: 39 nH
L7	2462587T40	33 nH
L8	2462587T42	47 nH
L9	2462587T40	33 nH
L10	2462587T42	47 nH
L11	2460591B04	11.03 nH
L12	2460591M32	27.42 nH
L13	2460591B80	19.61 nH
L14, L15	2460591B04	11.03 nH
L25	2462587Q48	1.2 uH
L30, L31	2460591B22	8.67 nH
L32	2460591B04	11.03 nH
L34, L35	2460591B22	8.67 nH
L37	2460591B04	11.03 nH
L101, L102	2462587T20	270 nH
L103	-----	Not Placed.
L105	2462587T20	270 nH
L107, L108	2462587T17	150 nH
L121, L122	2462587T20	270 nH
L123	2462587V38	220 nH
L126 thru L128	2460591B04	11.03 nH
L201	2462587T38	22 nH
L202	2462587Q20	2.2 uH 20%
L204	2462587Q42	390 nH 10%
L205	2462587V27	27 nH
L207	2462587V38	220 nH
L208, L209	2462587T22	390 nH
L210	2405619V01	18.1 nH
L211	2405619V05	12 nH
L212	2462587V26	22 nH
L213	2462587T22	390 nH
L215	2462587T22	390 nH
L216	2462587T05	15 nH 10%
L218	2462587T22	390 nH
L219	2462587T37	18 nH
L220	2462587T39	27 nH
L221	2462587T22	390 nH
L223	2462587Q42	390 nH 10%
L224	2462587T40	33 nH
L302	2462587Q42	390 nH 10%
L401	2462575A16	3.9 uH 10%
L402	2462587V37	180 nH
L600, L601	2405452C59	910 nH
L602	2405452C64	1.5 uH
L603	2405452C61	1.1 uH
L605	2462587N65	750 nH
Q1	4805218N55	TRANSISTOR: See Note 1. NPN
Q101	4805128M16	PNP
Q107	4805921T02	Switching
Q108	4802245J10	Dual NPN
Q110	4802245J12	Switching
Q111	4805128M16	PNP
Q201	4802245J15	JFET P-Channel
Q202, Q203	4805218N55	NPN
R7	0662057A25	100
R22, R23	0662057A73	10k
R26	-----	Not Placed.
R27	0662057A01	10
R36	-----	Not Placed.
R101	0662057A73	10k
R102	0662057A65	4.7k
R106	0662057A61	3.3k
R107	0662057A58	2.4k
R110	0662057A65	4.7k

R111, R112	0662057A49	1k
R113	0662057A73	10k
R114	0662057A77	15k
R115	0662057G27	182k
R116	0662057G19	130k
R118	0662057A97	100k
R125	0662057B22	1M
R126	0662057A18	51
R127	0662057A12	30
R128	0662057A89	47k
R129	0662057A65	4.7k
R130	-----	Not Placed.
R131	0662057B22	1M
R203	0662057A01	10
R204	0662057A73	10k
R205	0662057A77	15k
R206	0662057A73	10k
R207	0662057A93	68k
R208	0662057A58	2.4k
R209	0662057A41	470
R210	0662057A37	330
R211	0662057A27	120
R212, R213	0662057A46	750
R214	0662057A89	47k
R215	0662057A88	43k
R217	0662057A77	15k
R218	0662057A97	100k
R219	0662057A05	15
R220	0662057A56	2k
R221	0662057A51	1.2k
R222	0662057A56	2k
R223	0662057A89	47k
R301	0662057B47	0 ±.050
R302	0662057C01	0 ±.050
R401	0660079U18	5.1
R402	0662057B08	270k
R403	0662057A83	27k
R404	0662057A73	10k
R405	0662057A13	33
R406	0662057A69	6.8k
R407	0662057A17	47
R410, R411	0662057A21	68
R412	0662057A13	33
R413	0662057A35	270
R414	0662057A56	2k
R416	0662057A80	20k
R417	0662057A01	10
R418	0662057A53	1.5k
R419	0662057A89	47k
R420	0662057A80	20k
R421	0662057A56	2k
R510	0662057B47	0 ±.050
R601	0662057A25	100
R602	0662057A56	2k
R603	0662057A85	33k
R604	0662057A75	12k
R605	0662057A61	3.3k
R610	0662057B47	0 ±.050
RT101	0605621T02	THERMISTOR: TMTR CHIP SURFACE MT
S201	2602657J01	SHIELD: VCO
S202	2602674J02	VCO, Back
S203	2602658J01	Pendulum
S204	2602675J01	Synthesizer, Back
S205	2602660J01	Harmonic Filter, UHF
S206	2602686J01	Coil
S207	2605547X01	Varactor

T1	2505515V08	TRANSFORMER: 4:1
T2	2505515V11	16:1
U1	5105329V20	INTEGRATED CIRCUIT MODULE: See Note 1
U2	5105329V26	RF Amplifier
U101	5105835U52	Mixer
U102	5105835U51	TX (ALC)
U104	5102001J68	D/A Converter
U105	5105385Y10	Coupler
U106	5105385Y10	RF Power Amplifier
U201	5105469E65	5 Volt Regulator
U202	5102227J37	VCO Buffer
U203	5105469E65	5 Volt Regulator
U204	5105385Y42	16.8 MHz Reference Oscillator
U401	5105457W81	Fractional-N-Synthesizer
VR001	4813830A33	ABACUS
VR402	4805129M58	DIODE: See Note 1. Zener, 20V Varactor

- Notes:
- For optimum performance, order replacement diodes, transistors, and circuit modules by Motorola part number only.
 - When ordering crystals, specify carrier frequency, crystal frequency, crystal type number, and Motorola part number.
 - Part value notations:
 $p=10^{-12}$
 $n=10^{-9}$
 $\mu=10^{-6}$
 $m=10^{-3}$
 $k=10^3$
 $M=10^6$
 - ITEM refers to the component reference designator.
 - The UHF RF Board uses a 6-layer printed circuit board.



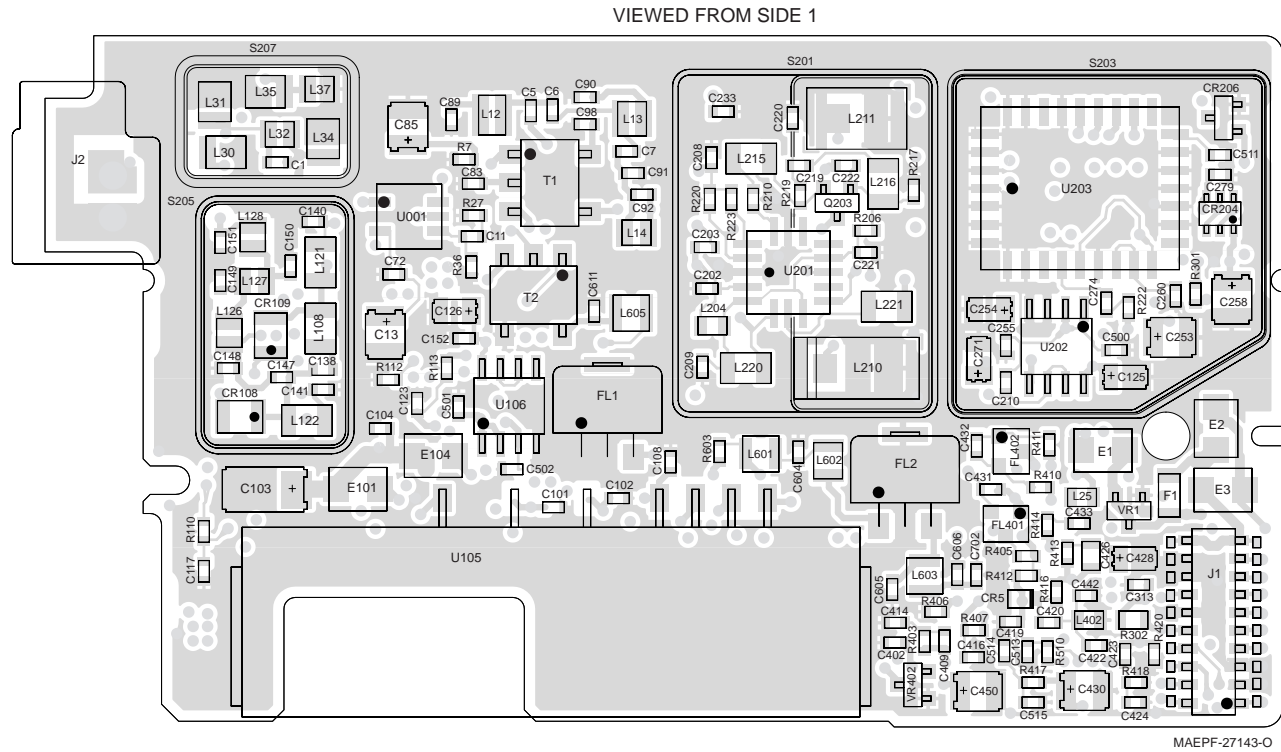


REFER TO BOM FOR A SPECIFIC KIT FOR CORRECT PART LIST.

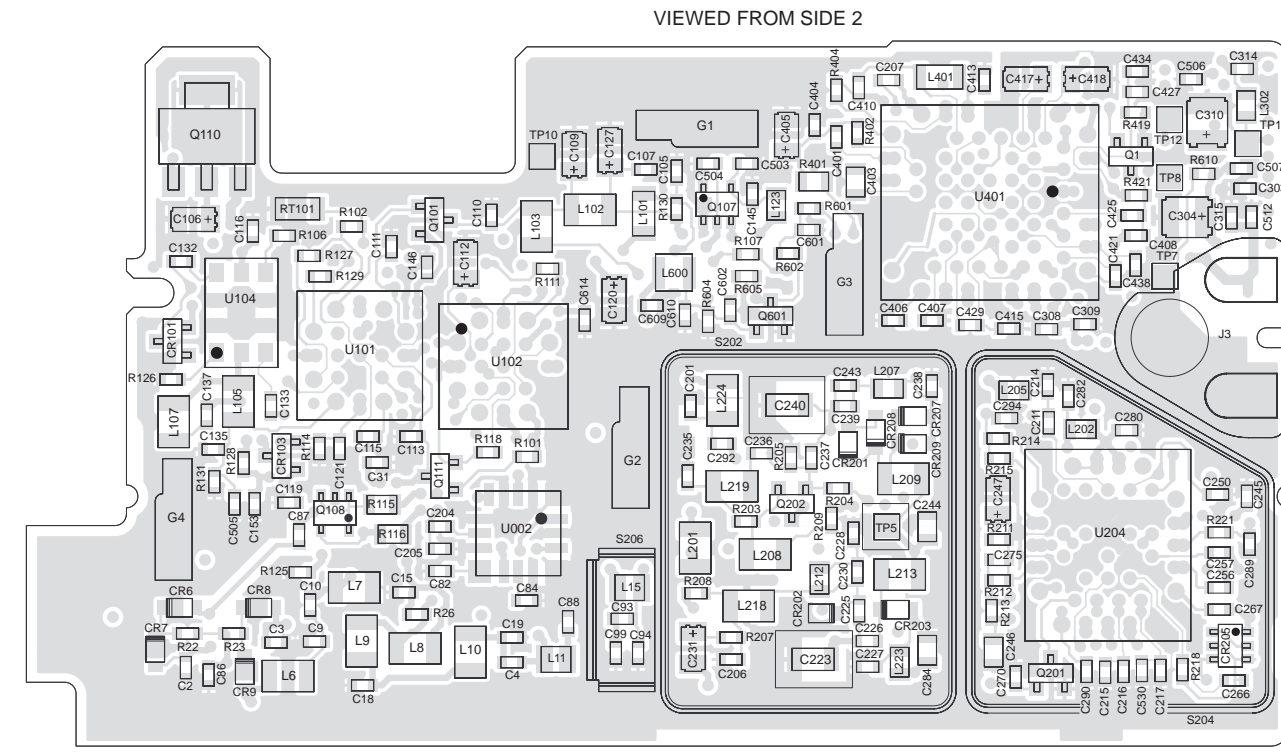
63B81094C73-C0

NLE4244P UHF Range 2 Transceiver Board Schematic Diagram

NLE4244P UHF Range 2 Transceiver Board
Electrical Parts List



MAEPF-27143-O



MAEPF-27144-O

ITEM	MOTOROLA PART NUMBER	DESCRIPTION
		CAPACITOR, Fixed: pF ±5%; 50V unless otherwise stated
C1	2113930F15	3.3 pF 50V ±0.25 pF 50V
C2, C3	2113930F12	2.4 pF 50V ±0.25 pF 50V
C4	2113930F36	24
C5, C6	2113930F20	5.1 pF 50V ±0.25 pF 50V
C7	2113930F28	11
C9	2113930F15	3.3 pF 50V ±0.25 pF 50V
C10	2113930F29	12 pF
C11	2113931F49	.01 uF
C13	2311049A66	22 uF
C15	2113930F47	68
C18	-----	Not Placed.
C19	2113930F19	4.7 pF 50V ±0.25 pF 50V
C31	2113931F49	.01 uF
C72	2113930F51	100
C82	2113931F49	.01 uF
C83	2113930F51	100
C84	2113931F49	.01 uF
C85	2311049J23	10 uF
C86	2113930F47	68
C87	2113930F51	100
C88	2113930F45	56
C89	2113930F19	4.7 pF 50V ±0.25 pF 50V
C90	2113930F26	9.1 pF 50V ±0.25 pF 50V
C91	2113930F28	11
C92	2113930F09	1.8 pF 50V ±0.1 pF 50V
C93	2113930F17	3.9 pF 50V ±0.25 pF 50V
C94	2113930F27	10
C98	2113930F51	100
C99	2113930F21	5.6 pF 50V ±0.25 pF 50V
C101	2113930F51	100
C102	-----	Not Placed.
C103	2311049J26	10 uF
C104, C105	2113930F51	100
C106	2311049A56	4.7 uF
C107, C108	2113930F51	100
C109	2311049A07	1 uF
C110, C111	2113930F51	100
C112	2311049A07	1 uF
C113	2113930F51	100
C115	2113932K07	.047 uF +80/-20% 16V
C116	-----	Not Placed.
C117	2113930F51	100
C119	2113930F51	100
C120	-----	Not Placed.
C121	2113930F51	100
C123	2113932K15	0.1 uF +80/-20% 16V
C125, C126	2311049A54	3.3 uF
C127	-----	Not Placed.
C132	2113930F25	8.2 pF 50V ±0.25 pF 50V
C133	2113930F09	1.8 pF 50V ±0.1 pF 50V
C135	2113930F51	100
C137, C138	2113930F51	100
C140	2113931F41	4.7 nF
C141	2113930F51	100
C145	2113930F51	100
C146	-----	Not Placed.
C147	2113930F51	100
C148	2113930F11	2.2 pF 50V ±0.25 pF 50V

C149	2113930F27	10
C150	2113930F23	6.8 pF 50V ±0.25 pF 50V
C151	2113930F17	3.9 pF 50V ±0.25 pF 50V
C152	2113932K15	0.1 uF +80/-20% 16V
C153	2113930F47	68
C201, C202	-----	Not Placed.
C203	2113930F07	1.5 pF 50V ±0.1 pF 50V
C204	2113930F51	100
C205	-----	Not Placed.
C206	2113931F33	2.2 nF
C207	2113931F49	.01 uF
C208	2113930F51	100
C209	2113931F49	.01 uF
C210	2113932E07	.022 uF 10% 16V
C211	2113930F51	100
C214	2113930F14	3.0 pF 50V ±.25 pF 50V
C215	2113931F41	4.7 nF
C216, C217	2113930F51	100
C219	2113930F11	2.2 pF 50V ±0.25 pF 50V

C402	2113930F39	33
C403	2113743A13	.047 uF
C404	2113932K15	0.1 uF +80/-20% 16V
C405	2311049A42	3.3 uF
C406, C407	2113931F49	.01 uF
C408	2113931F25	1 nF
C409	2113931F21	680 pF
C410	2113930F48	75
C413	2113931F49	.01 uF
C414	2113931F45	6.8 nF
C415	2113932K15	0.1 uF +80/-20% 16V
C416	2113931F49	.01 uF
C417, C418	2311049A42	3.3 uF
C419	2113932K15	0.1 uF +80/-20% 16V
C420	2113930F36	24
C421	2113931F49	.01 uF
C422	2113930F41	39
C423, C424	2113930F42	43
C425	2113930F11	2.2 pF 50V ±0.25 pF 50V
C426	2113743A23	0.22 uF 10%
C427	2113931F41	4.7 nF
C428	2311049A40	2.2 uF
C429	2113932K15	0.1 uF +80/-20% 16V
C430	2311049J23	10 uF
C431, C432	2113930F39	33
C433	2113932K15	0.1 uF +80/-20% 16V
C434	2113931F49	.01 uF
C438	2113932K15	0.1 uF +80/-20% 16V
C442	-----	Not Placed.
C450	2311049J23	10 uF
C500 thru C504	2113930F47	68
C505	2113931F41	4.7 nF
C506, C507	2113930F47	68
C511, C512	2113932K15	0.1 uF +80/-20% 16V
C513	-----	Not Placed.
C514, C515	2113932K15	0.1 uF +80/-20% 16V
C530	2113931F25	1 nF
C601, C602	2113932K15	0.1 uF +80/-20% 16V
C604	2113930F07	1.5 pF 50V ±0.1 pF 50V
C605	2113930F19	4.7 pF 50V ±0.25 pF 50V
C606	2113930F26	9.1 pF 50V ±0.25 pF 50V
C609	2113930F16	3.6 pF 50V ±0.25 pF 50V
C610	2113930F27	10
C611	2113930F29	12 pF
C614	2113930F18	4.3 pF 50V ±0.25 pF 50V
C702	2113932K15	0.1 uF +80/-20% 16V
CR5 thru CR9	4862824C01	Varactor
CR101	4805129M67	Dual
CR103	4805129M67	Dual
CR108, CR109	4802482J02	PIN
CR201	4802245J29	Varactor
CR202	4862824C01	Varactor
CR203	4862824C03	Varactor
CR204, CR205	4802233J09	Triple
CR206	4805129M06	Triple
CR207 thru CR209	4802245J29	Varactor
E1 thru E2	2484657R01	Inductor bead
E101	2484657R01	Inductor bead
E104	-----	Not Placed.
F1	6505757V02	2 Amp
FL1, FL2	4805245J33	73.35 MHz

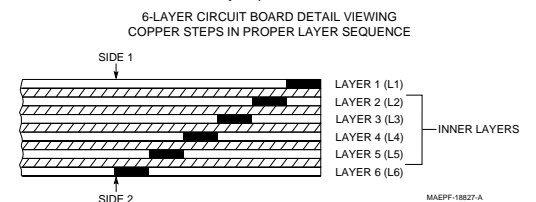
FL401, FL402	9105398W01	450kHz
G1 thru G4	3905643V01	CONTACT: Antenna Ground
J1	0905461X03	JACK: Transceiver/VOCON Connector
J2	3905113W03	Antenna Connector
J3	3902625J04	Contact B+
L6, L7	2462587T38	COIL, RF: 22 nH
L8	2462587T20	270 nH
L9	2462587T38	22 nH
L10	2462587T05	15 nH
L11	2460591B04	11.03 nH
L12	2460591M32	27.42 nH
L13	2460591B80	19.61 nH
L14, L15	2460591B04	11.03 nH
L25	2462587Q48	1.2 uH
L30, L31	2460591A01	4.22 nH
L32	2460591B04	11.03 nH
L34, L35	2460591A01	4.22 nH
L37	2460591B04	11.03 nH
L101, L102	2462587T20	270 nH
L103	-----	Not Placed.
L105	2462587T20	270 nH
L107, L107	2462587T17	150 nH
L121, L122	2462587T20	270 nH
L123	2462587V38	220 nH
L126 thru L128	2460591B04	11.03 nH
L201	2462587T37	18 nH
L202	2462587Q20	2.2 uH
L204	2462587Q42	390 nH
L205	2462587V26	22 nH
L207	2462587V36	150 nH
L208, L209	2462587T22	390 nH
L210	2405619V03	15.1 nH
L211	2405619V07	9 nH
L212	2462587V25	18 nH
L213	2462587T22	390 nH
L215	2462587T22	390 nH
L216	2462587T05	15 nH
L218	2462587T22	390 nH
L219	2462587T37	18 nH
L220	2462587T12	56 nH
L221	2462587T22	390 nH
L223	2462587Q42	390 nH
L224	2462587T42	47 nH
L302	2462587Q42	390 nH
L401	2462575A16	3.9 uH
L402	2462587V37	180 nH
L600, L601	2405452C59	910 nH
L602	2405452C64	1.5 uH
L603	2405452C61	1.1 nH
L605	2462587N65	750 nH
Q1	4805218N55	TRANSISTOR: See Note 1. NPN
Q101	4805128M16	PNP
Q107	4805921T02	Switching
Q108	4802245J10	Dual NPN
Q110	4802245J12	Switching
Q111	4805128M16	PNP
Q201	4802245J15	JFET P-Channel
Q202, Q203	4805218N55	NPN
Q601	4882022N70	NPN
		RESISTOR, Fixed: Ω ±5%; 1/8W Unless otherwise stated.

R7	0662057A25	100
R22, R23	0662057A73	10k
R026	-----	Not Placed.
R027	0662057A01	10
R036	-----	Not Placed.
R101	0662057A73	10k
R102	0662057A65	4.7k
R106	0662057A61	3.3k
R107	0662057A58	2.4k
R110	0662057A65	4.7k
R111, R112	0662057A49	1k
R113	0662057A73	10k
R114	0662057A77	15k
R115	0662057G27	182k
R116	0662057G19	130k
R118	0662057A97	100k
R125	0662057B22	1M
R126	0662057A18	51
R127	0662057A12	30
R128	0662057A89	47k
R129	0662057A65	4.7k
R130	-----	Not Placed.
R131	0662057B22	1M
R203	0662057A01	10
R204	0662057A73	10k
R205	0662057A77	15k
R206	0662057A73	10k
R207	0662057A93	68k
R208	0662057A58	2.4k
R209	0662057A41	470
R210	0662057A37	330
R211	0662057A27	120
R212, R213	0662057A46	750
R214	0662057A89	47k
R215	0662057A88	43k
R217	0662057A77	15k
R218	0662057A97	100k
R219	0662057A09	22
R220	0662057A56	2k
R221	0662057A51	1.2k
R222	0662057A56	2k
R223	0662057A89	47k
R301	0662057B47	0 ±.050
R302	0662057C01	0 ±.050
R401	0660079U18	5.1
R402	0662057B08	270k
R403	0662057A83	27k
R404	0662057A73	10k
R405	0662057A13	33
R406	0662057A69	6.8k
R407	0662057A17	47
R410, R411	0662057A21	68
R412	0662057A13	33
R413	0662057A35	270
R414	0662057A56	2k
R416	0662057A80	20k
R417	0662057A01	10
R418	0662057A53	1.5k
R419	0662057A89	47k
R420	0662057A80	20k
R421	0662057A56	2k
R510	0662057B47	0 ±.050
R601	0662057A25	100
R602	0662057A56	2k
R603	0662057A85	33k

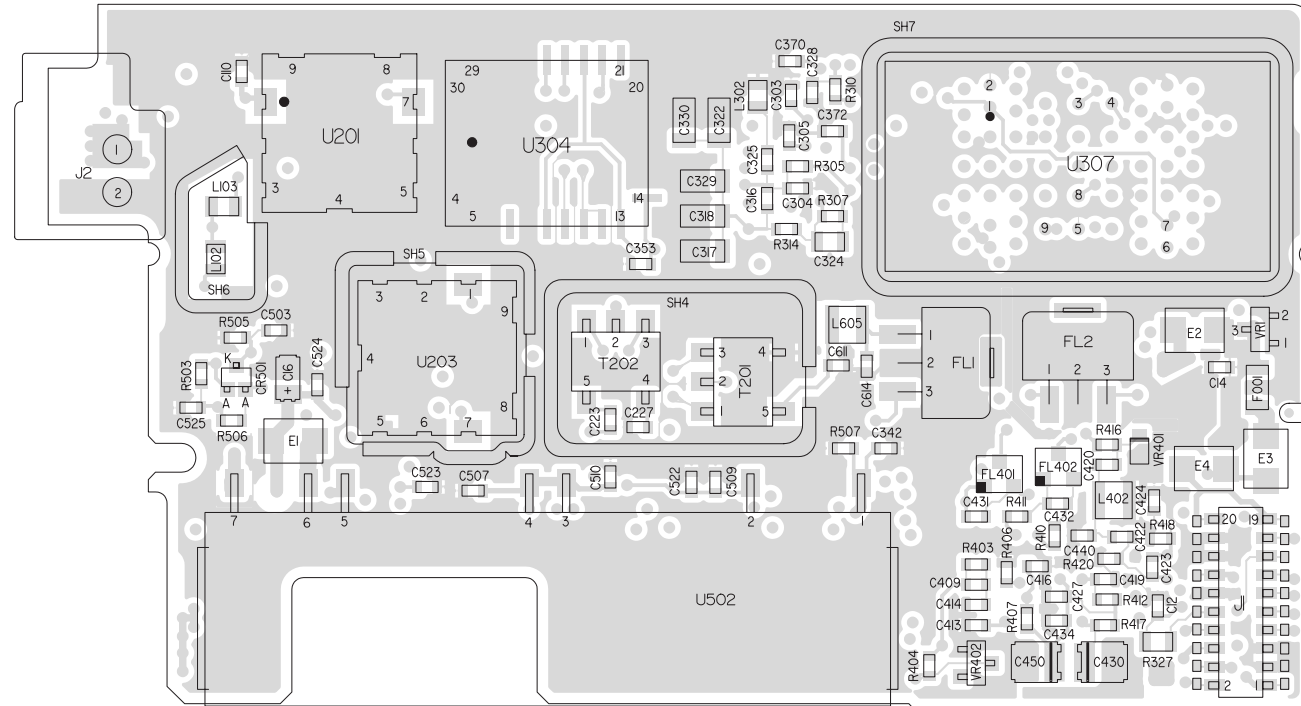
R604	0662057A75	12k
R605	0662057A61	3.3k
R610	0662057B47	0 ±.050
RT101	0605621T02	50k
S201	2602657J01	SHIELD: VCO
S202	2602674J02	VCO, Back
S203	2602658J01	Pendulum
S204	2602675J01	Synthesizer, Back
S205	2602660J01	Harmonic Filter, UHF
S206	2602686J01	Coil
S207	2605547X01	Varactor
T1	2505515V08	4:1
T2	2505515V11	16:1
U1	5105329V20	INTEGRATED CIRCUIT MODULE: See Note 1. RF Amplifier
U2	5105329V26	Mixer
U101	5105835U52	TX (ALC)
U102	5105835U51	D/A Converter
U104	5102001J68	Coupler
U105	5105385Y11	RF Power Amplifier
U106	5105469E65	5 Volt Regulator
U201	5102227J37	VCO Buffer
U202	5105469E65	5 Volt Regulator
U203	5105385Y42	16.8 Reference Oscillator
U204	5105457W81	Fractional-N-Synthesizer
U401	5105835U90	ABACUS
VR1	4813830A33	DIODE: See Note 1. Zener, 20V
VR402	4805129M58	Varactor

Notes:

- For optimum performance, order replacement diodes, transistors, and circuit modules by Motorola part number only.
- When ordering crystals, specify carrier frequency, crystal frequency, crystal type number, and Motorola part number.
- Part value notations:
 $p=10^{-12}$
 $n=10^{-9}$
 $\mu=10^{-6}$
 $m=10^{-3}$
 $k=10^3$
 $M=10^6$
- ITEM refers to the component reference designator.
- The UHF RF Board uses a 6-layer printed circuit board.

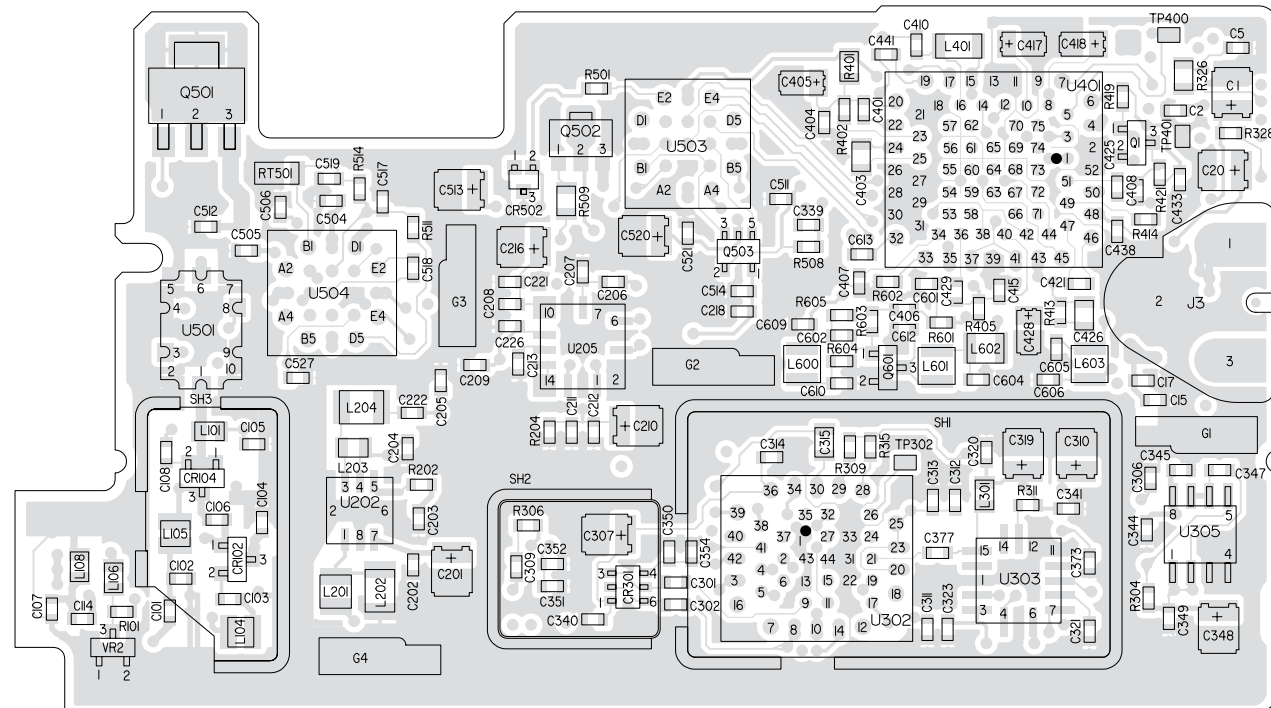


VIEWED FROM SIDE 1



MAEPF-27145-O

VIEWED FROM SIDE 2



MAEPF-27146-O

NUF6411K 800 MHz Transceiver Circuit Board Details and Parts List

NUF6411K 800 MHz Transceiver Board
Electrical Parts List

ITEM	MOTOROLA PART NUMBER	DESCRIPTION
		CAPACITOR, Fixed: pF ±5%; 50V unless otherwise stated
C1	2311049J12	4.7 uF
C2	2113932E07	.022 uF 10% 16V
C5	2113930F39	33
C12	-----	Not Placed.
C14	2113930F39	33
C15	2113932E07	.022 uF 10% 16V
C16	2311049A07	1 uF
C17	2113932E07	.022 uF 10% 16V
C20	2311049J11	4.7 uF
C101	2113930F34	20
C102	-----	Not Placed.
C103	2113930F39	33
C104	2113930F34	20
C105	2113930F39	33
C106	2113930F12	2.4 pF 50V ±0.25 pF 50V
C107	-----	Not Placed.
C108	2113930F39	33
C110	2113930F15	3.3 pF 50V ±0.25 pF 50V
C114	2113930F39	33
C201	2311049J23	10 uF
C202	2113930F41	39
C203	2113930F51	100
C204	2113932E07	.022 uF 10% 16V
C205	-----	Not Placed.
C206	2113930F39	33
C207	2113930F14	3 pF 50V ±0.25 pF 50V
C208	2113930F41	39
C209	2113932E07	.022 uF 10% 16V
C210	2311049J23	10 uF
C211	2113932E07	.022 uF 10% 16V
C212	2113930F41	39
C213	2113932E07	.022 uF 10% 16V
C216	2311049J23	10 uF
C218	2113932E07	.022 uF 10% 16V
C221	2113932E07	.022 uF 10% 16V
C222	2113930F22	6.2 pF 50V ±0.25 pF 50V
C223	2113930F20	5.1 pF 50V ±0.25 pF 50V
C226	2113930F41	39
C227	2113931F13	330
C301, C302	2113932K15	0.1 uF +80/-20% 16V
C303	2113930F51	100
C304	2113930F39	33
C305	2113930F51	100
C306	2113930F39	33
C307	2311049J12	4.7 uF
C309	2113932E07	.022 uF 10% 16V
C310	2311049J23	10 uF
C311	2113930F39	33
C312, C313	2113932K15	0.1 uF +80/-20% 16V
C314	2113932E07	.022 uF 10% 16V
C315	2105248W02	1 nF
C316	2113932E07	.022 uF 10% 16V
C317, C318	2109720D14	0.1 uF
C319	2311049J23	10 uF
C320	2113930F39	33
C321	2113932E07	.022 uF 10% 16V
C322	2109720D14	0.1 uF
C323	2113932E07	.022 uF 10% 16V
C324	2113743A13	.047 uF
C325	2113931F21	680

C328	2113930F51	100
C329, C330	2109720D14	0.1 uF
C339	2113930F29	12
C340	2113932K15	0.1 uF +80/-20% 16V
C341	2113932E07	.022 uF 10% 16V
C342	2113930F19	4.7 pF 50V ±0.25 pF 50V
C344	2113932E07	.022 uF 10% 16V
C345	2113932K15	0.1 uF +80/-20% 16V
C347	2113932E07	.022 uF 10% 16V
C348	2311049J23	10 uF
C349	2113932E07	.022 uF 10% 16V
C350	2113932K15	0.1 uF +80/-20% 16V
C351	2113932K07	.047 uF +80/-20% 16V
C352	2113930F39	33
C353	2113932E07	.022 uF 10% 16V
C354	2113930F39	33
C370	2113930F18	4.3 pF 50V ±0.25 pF 50V
C372	2113932K15	0.1 uF +80/-20% 16V
C373	2113932E07	.022 uF 10% 16V
C377	2113930F14	3 pF 50V ±0.25 pF 50V
C401	2113932K03	.033 uF +80/-20% 16V
C403	2113743A13	.047 uF
C404	2113932K15	0.1 uF +80/-20% 16V
C405	2311049A42	3.3 uF
C406, C407	2113931F49	10 nF
C408	2113931F25	1 nF
C409	2113931F21	680
C410	2113930F48	75
C413	2113931F49	10 nF
C414	2113931F45	6.800 nF
C415	2113932K15	0.1 uF +80/-20% 16V
C416	2113931F49	10 nF
C417, C418	2311049A42	3.3 uF
C419	2113932K15	0.1 uF +80/-20% 16V
C420	2113930F34	20
C421	2113931F49	10 nF
C422	2113930F41	39
C423, C424	2113930F45	56
C425	2113930F11	2.2 pF 50V ±0.25 pF 50V
C426	2113743A23	0.22 uF 10%
C427	2113931F41	4.7 nF
C428	2311049A40	2.2 uF
C429	2113932K15	0.1 uF +80/-20% 16V
C430	2311049J23	10 uF
C431, C432	2113930F39	33
C433	2113932K15	0.1 uF +80/-20% 16V
C434	2113931F49	10 nF
C438	2113932K15	0.1 uF +80/-20% 16V
C440	-----	Not Placed.
C441	2113931F49	10 nF
C450	2311049J23	10 uF
C503 thru C507	2113930F39	33
C509	2113930F39	33
C510	2113932E07	.022 uF 10% 16V
C511	2113930F39	33
C512	2113932E07	.022 uF 10% 16V
C513	2311049A13	4.7 uF
C514	2113932E07	.022 uF 10% 16V
C517	2113930F39	33
C518	2113932K15	0.1 uF +80/-20% 16V
C519	2113930F39	33
C520	2311049J23	10 uF
C521	2113932E07	.022 uF 10% 16V
C522	2113932K15	0.1 uF +80/-20% 16V
C523 thru C525	2113930F39	33
C527	2113932E07	.022 uF 10% 16V
C601, C602	2113932K15	0.1 uF +80/-20% 16V
C604	2113930F18	4.3 pF 50V ±0.25 pF 50V

C605	2113930F16	3.6 pF 50V ±0.25 pF 50V
C606	2113930F24	7.5 pF 50V ±0.25 pF 50V
C609	2113930F15	3.3 pF 50V ±0.25 pF 50V
C610	2113930F24	7.5 pF 50V ±0.25 pF 50V
C611	2113930F27	10
C612	2113930F14	3 pF 50V ±0.25 pF 50V
C613	2113932K15	.1 uF +80/-20% 16V
C614	2113930F21	5.6 pF 50V ±0.25 pF 50V
		DIODE: See Note 1.
CR102	4805129M96	Dual
CR104	4805129M96	Dual
CR301	4802233J09	Triple
CR501, CR502	4805218N57	Dual
		CORE:
E1 thru E4	2484657R01	Inductor Bead
		FUSE:
F1	6505757V02	2 Amp
		FILTER: See Note 2.
FL1, FL2	4805245J33	73.35 MHz
FL401, FL402	9105398W01	450 kHz
		CONTACT:
G1 thru G4	3905643V01	Antenna Ground
		JACK:
J1	0905461X03	Transceiver/VOCON Connector
J2	3905113W03	Antenna Connector
J3	3902625J04	Contact, B+
		COIL, RF:
L101	2462587V37	180 nH
L102	2462587V24	15 nH
L103	2462587V37	180 nH
L104, L105	2460591A11	7.66 nH
L106	2462587V37	180 nH
L108	2462587V37	180 nH
L201	2460591C40	17.02 nH
L202	2460591E24	23.75 nH
L203	2462587V37	180 nH
L204	2460591E24	23.75 nH
L301	2462587V24	15 nH
L302	2462587Q59	10 uH
L401	2462575A16	3.9 uH
L402	2462587N56	180 nH
L600, L601	2405452C59	910 nH
L602	2405452C64	1.5 uH
L603	2405452C61	1.1 uH
L605	2462587N65	750 nH
		TRANSISTOR: See Note 1.
Q1	4805218N55	NPN
Q501	4805218N45	Switching
Q502	4805128M27	PNP
Q503	4805921T06	Dual PNP
		RESISTOR, Fixed: Ω±5%; 1/8W Unless otherwise stated.
R101	0662057A90	51k
R202	0662057A01	10
R204	0662057A25	100
R304	0662057A90	51k
R305	0662057A56	2k
R306	0662057A65	4.7k
R307	0662057A49	1k
R309	0662057A90	51k
R310	0662057A49	1k
R311	0662057A77	15k
R314	0662057A18	51
R315	0662057A87	39k
R326 thru R328	0662057C01	0 ±.050
R401	0660079U18	5.1
R402	0662057B08	270k
R403	0662057A83	27k

R404	0662057A73	10k
R405	0662057A13	33
R406	0662057A69	6.8k
R407	0662057A17	47
R410, R411	0662057A21	68
R412	0662057A13	33
R413	0662057A35	270
R414	0662057A56	2k
R416	0662057A80	20k
R417	0662057A01	10
R418	0662057A53	1.5k
R419, R420	0662057A89	47k
R421	0662057A58	2.4k
R501	0662057A73	10k
R503	0662057A73	10k
R505	0662057A77	15k
R506	0662057A69	6.8k
R507	0662057A61	3.3k
R508	0662057A49	1k
R509	0662057C75	1k
R510	0662057B22	1 M
R511	0662057A56	2k
R514	0662057A73	10k
R601	0662057A25	100
R602	0662057A56	2k
R603	0662057A85	33k
R604	0662057A75	12k
R605	0662057A61	3.3k
		THERMISTOR:
RT501	0605621T02	50k
		SHIELD:
SH1	2605258V01	Synthesizer
SH2	2605259V01	Diode
SH3	2605260V01	RF Switch
SH4	2605418V01	Transformer
SH5	2605263V01	Filter, 3-Pole
SH6	2605634V01	Antenna
SH7	2605890U03	VCO
		TRANSFORMER:
T201	2505515V07	25:1
T202	2505515V04	5:1
		INTEGRATED CIRCUIT MODULE:
		See Note 1.
U201	5105279V15	3-Pole Filter
U202	5105329V21	RF Amplifier
U203	5105279V15	3-Pole Filter
U205	5105329V26	Mixer Buffer
U302	5105457W81	Fractional-N-Synthesizer
U303	5105662U76	VCO Buffer
U304	5105385Y61	16.8 MHz Reference Oscillator
U305	5105469E65	5-Volt Regulator
U307	5105238U94	VCO
U401	5105835U90	ABACUS
U501	5105279V26	Coupler
U502	5108038H12	RF Power Amplifier
U503	5105835U51	D/A Converter
U504	5105835U52	TX ALC
		DIODE: See Note 1.
VR001	4813830A33	Zener, 20V
VR002	-----	Not Placed.
VR401	4862824C01	Varactor
VR402	4805129M58	Varactor

Notes:

- For optimum performance, order replacement diodes, transistors, and circuit modules by Motorola part number only.
- When ordering crystals, specify carrier frequency, crystal frequency, crystal type number, and Motorola part number.
- Part value notations:
 $p=10^{-12}$
 $n=10^{-9}$
 $\mu=10^{-6}$
 $m=10^{-3}$
 $k=10^3$
 $M=10^6$
- ITEM refers to the component reference designator.
- The 800 MHz Transceiver Board uses a 6-layer printed circuit board.

